

VIRGINIA GENERAL ASSEMBLY



VIRGINIA GENERAL ASSEMBLY

415,000 SQUARE FEET; 14 FLOORS AND A LOWER LEVEL

6 YEARS TO BUILD (COVID; SUPPLY CHAIN DELAYS; FAÇADE PRESERVED)

HISTORICAL FAÇADE PRESERVED (FORMERLY 1912 LIFE INSURANCE COMPANY OF VIRGINIA)

2 TUNNELS (ONE TO THE CAPITOL – ONE TO THE PARKING GARAGE)

ENERGY-SAVING TECHNOLOGY (LIGHTS AND POWER OUTLETS - MOTION DETECTION)

SENATE MEETING SPACES:

- 3 FULL COMMITTEE ROOMS
- 4 SUBCOMMITTEE ROOMS
- SENATE FINANCE MEETING ROOM
- SENATE BRIEFING ROOM

HOUSE MEETING SPACES:

- 3 FULL COMMITTEE ROOMS (ONE WITH THE CAPACITY OF 400)
- 7 SUBCOMMITTEE ROOMS
- HOUSE APPROPRIATIONS MEETING ROOM
- HOUSE BRIEFING ROOM

DRY ERASE BOARDS AND STAND UP DESKS FOR EACH OFFICE

ENHANCED SECURITY – INCLUDING 632 BADGE READERS

NEW CAFÉ WITH A COFFEE STATION AND BRICK OVEN

CONSTITUENT AREA

VIRGINIA GENERAL ASSEMBLY



General Assembly Building Directory

Lower Level

- House Room A – Room #008
- Tunnel Entrance to Capitol

1st Floor

- Lobby/Information
- Capitol Police Security Screening
- Meriwether's Dining
- Commonwealth Room – Room #103

2nd Floor

- House Room B – Room #205
- House Room C – Room #206
- House North Subcommittee Room – Room #200
- House South Subcommittee Room – Room #210
- House Briefing Room – Room #209

3rd Floor

- Senate Committee Operations Staff – Room #310
- Senate Room A – Room #305
- Senate Room B – Room #306
- Senate Room C – Room #311
- Senate Subcommittee Room – Room #300

4th Floor

- Senate Human Resources and Fiscal Office – Room #401A
- Senate Briefing Room – Room #400
- Division of Legislative Services – Room #410

5th Floor

- Senate Support Services Staff– Rooms #530 - 537
- Senate Member Offices – Rooms #501 – 514; 519 - 521

6th Floor

- Senate Member Offices – Rooms #601 – 616; 618 - 621

7th, 8th, 9th, 10th and 11th Floors

- House Member Offices

12th Floor

- House Appropriations Chair & Vice Chair
- House Appropriations Staff House
- Appropriations Meeting Room – Room #1200

13th Floor

- Senate Technology Staff – Room #1330A
- Senate Finance and Appropriations Staff – Room #1301A
- Senate Finance and Appropriations Meeting Room – Room #1300

14th Floor

- Senate Leadership Offices – Rooms #1404 - 1407
- Senate Leadership Conference Room – Room #1400B
- Speaker's Conference Room – Room #1400A
- House Leadership Offices

DIRECTORY

VIRGINIA GENERAL ASSEMBLY

POLICIES

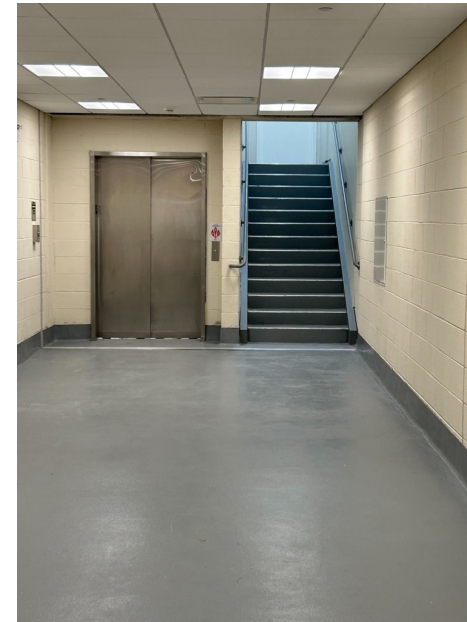
- No pets - service animals only
- No smoking or vaping
- No microwaves, heaters in offices or individual water coolers
- No signs, artwork or any type of political/partisan paraphernalia displayed in hallways outside of members' office or elevators
- No furniture is to be rearranged or moved in committee rooms, subcommittee rooms, offices or hallways without prior approval of the senate clerk
- During interim, stairwells are locked, except for the 1st floor
- Elevators are open 8:30 a.m. to 5:00 p.m. After those times, your badge is required to operate

VIRGINIA GENERAL ASSEMBLY

PARKING DECK

- Members, clerks' office staff, some executive branch members
- 25 EV stations, 4 on 2nd and 3rd levels; 2 on the remaining levels
- 7 total levels
- Northeast elevator is operated by badge, takes you to the tunnel - LL
- Loading dock that supports GAB also in deck
- Address is 821 East Broad Street, advise Senate Support Services of orders, as we must pick up deliveries

VIRGINIA GENERAL ASSEMBLY



TUNNELS

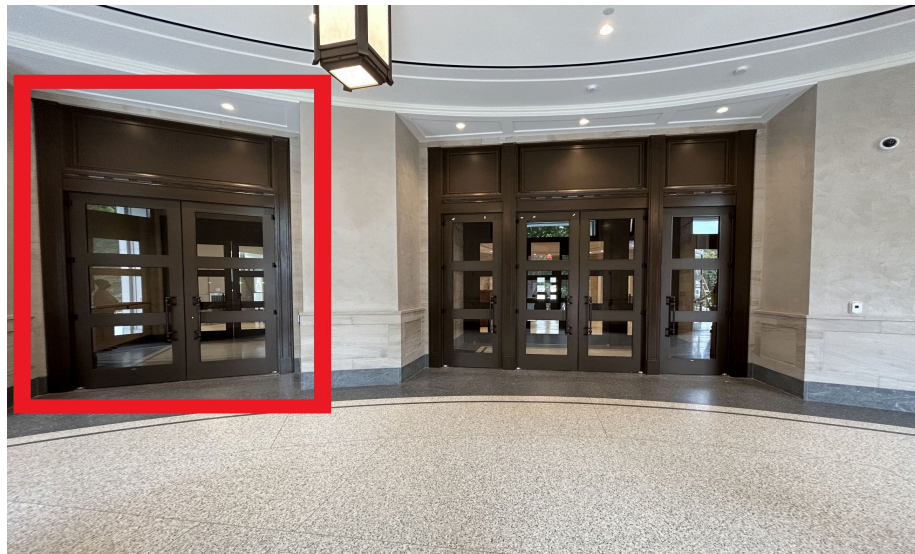
- From the parking deck, select LL (lower level) to access the tunnel to the GAB
- Capitol police is stationed in the tunnel entrance to GAB
- Badge is required
- Tunnel to the Capitol will be open by the end of the year
- Will be open to public as well as members and staff
- Access also in the LL (lower level)

VIRGINIA GENERAL ASSEMBLY

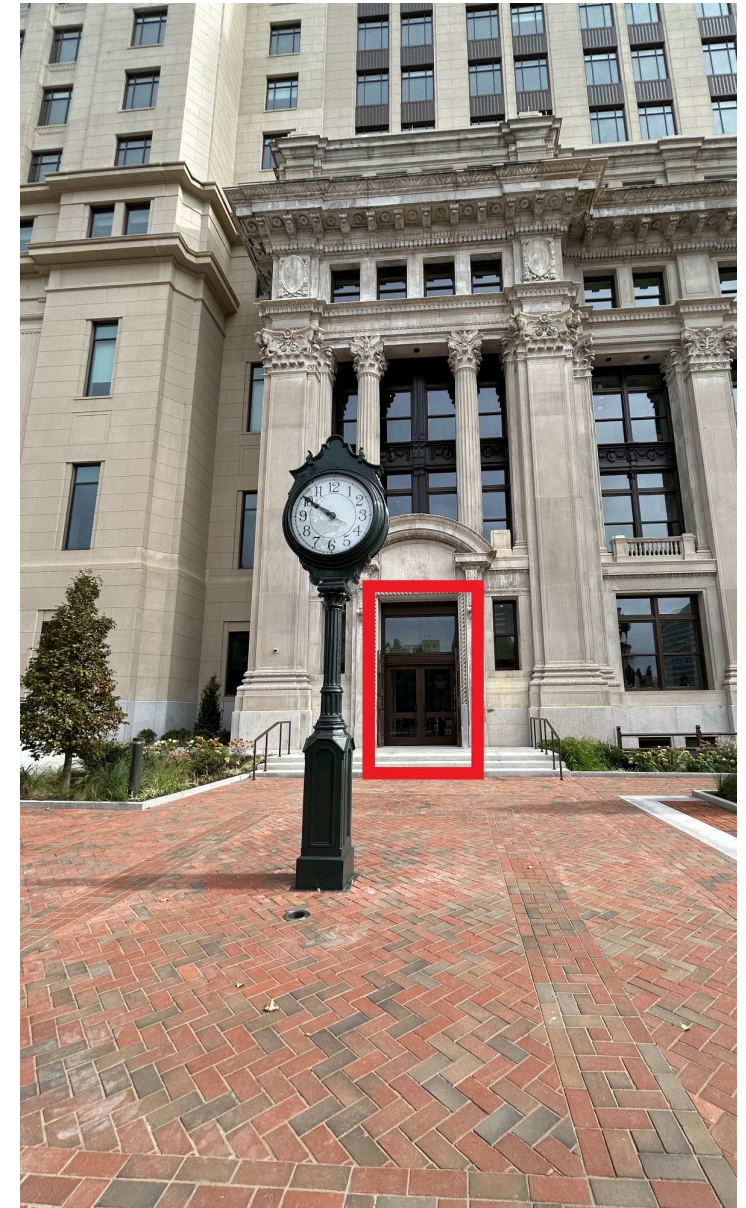


DARDEN GARDEN ENTRY

- Enter the GAB via the Darden Garden entrance. The card reader is located on the western most door (closest to 9th street).
- Once you enter from Darden Gardens, you will use the card reader on the left side door. You will then enter a vestibule that leads to the capitol police security hall. The center doors are EXIT ONLY



- The member/staff entrance is located near the Darden Garden clock. This entrance is for members, senate/house clerk's office staff and DLS staff. The card reader is located to the right of the door.

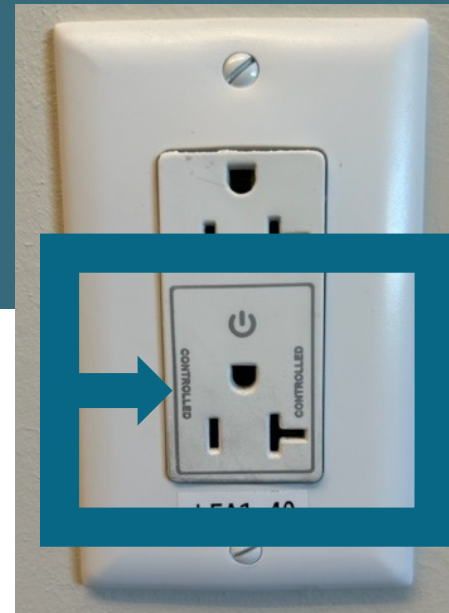


VIRGINIA GENERAL ASSEMBLY



OFFICES

- Furniture is inventoried, please do not rearrange or remove unless approved by the Clerk
- Lights are motion, energy efficient (they may turn off when you are in your office)
- “Controlled outlets” are controlled by occupancy sensors, and after 30 minutes of no movement, this will automatically shutdown. Please be mindful of where you plug in computers, printers, fridges, etc. This is a picture of what the outlet looks like. You'll see "controlled" next to the plug that is controlled by sensors.



VIRGINIA GENERAL ASSEMBLY



QUESTIONS?

MCCANN |